




TECHNICAL DATA AND INFORMATION

MHL350D FQC
SCRAP RECYCLING MACHINE WITH QUICK CONNECT





-  148 kW/198 hp
-  32 - 37.5 t
-  up to 16 m





TECHNICAL DATA MHL350 D/MHL350 D FQC





 OPERATING WEIGHT WITHOUT ATTACHMENTS	MHL350 D FQC
32 - 35.5 t	31.4 - 37.5 t


 DIESEL ENGINE	
MANUFACTURER AND MODEL	Deutz TCD 2013 L06 2V
DESIGN	6-cylinder inline
ENGINE CONTROL	EMR III
TYPE	4-stroke diesel, common rail direct injection, turbo-charger with charge air cooling
ENGINE OUTPUT	148 kW/198 hp
NOMINAL SPEED	2000 min ⁻¹
DISPLACEMENT	7.2 l
COOLING SYSTEM	Liquid intercooling with temperature-controlled fan speed
EMISSION STANDARDS	COM III and EPA Tier III
AIR FILTER DESIGN	Two-stage filter with safety valve
FUEL CAPACITY (USABLE)	383 l

 ELECTRICAL SYSTEM	
OPERATING VOLTAGE	24 V
BATTERIES	2 x 12 V / 100 Ah / 760 A (in accordance with EN)
LIGHTING SET	1 x H3 floodlight on upper carriage, 1 x H3 floodlight on cab floor, turn signal and rear sidemarker lamps
OPTION	13 kW or 20 kW d.c. generator with control, driven by V-belt direct from diesel engine

 TRAVEL DRIVE	
	Hydrostatic drive through infinitely variable axial piston motor with directly mounted travel brake valves, two-speed shift gear, 4-wheel drive
TRAVEL SPEED 1st GEAR	max. 5 km/h (3.1 mph)
TRAVEL SPEED 2nd GEAR	max. 20 km/h (12.4 mph)
GRADEABILITY	max. 45%
TURNING RADIUS	8.7 m

 SWING SYSTEM	
RING GEAR	Internally toothed ball ring gear (double row)
DRIVE	3-stage planetary gear with integrated multi-disc brake
UPPER CARRIAGE SWING SPEED	Infinitely variable from 0 - 6 min ⁻¹
PIVOT BRAKE	Electrically operated
MAX. PIVOT TORQUE	78 kNm

 UNDERCARRIAGE	
FRONT AXLE	Planetary drive axle with integrated drum brake, rigidly mounted, max. steering angle 27°
REAR AXLE	Oscillating planetary drive rear axle with integrated drum brake and selectable oscillating axle lock
STABILIZERS	4-point stabilizers
TIRES	Solid rubber, elastic, 8-fold 12.00 - 20

 BRAKE SYSTEM	
SERVICE BRAKE	Hydraulic single-circuit braking system acting on all four wheel pairs
PARKING BRAKE	Electrically operated disc brake at transmission, acting on both front and rear axle



HYDRAULIC SYSTEM

LINDE mobile hydraulic system with load limit control and fuel-saving power demand control. Separate oil cooler, temperature-controlled fan speed

HYDRAULIC OIL FILTER

Filter elements integrated in the oil tank; maintenance interval: 3000 operating hrs. Central lubrication system

MAX. PUMP CAPACITY

2 x 320 l/min

MAX. OPERATING PRESSURE

320/ 360 bar

HYDRAULIC OIL TANK

359 l usable tank capacity



OPERATOR'S CAB

Elastically supported, infinitely variable hydraulically height-adjustable with max. eye level of 5.6 m. Sound-deadened, heat-insulated panoramic windows for optimum all-around view, windshield with pull-down sunblind that slides under cab roof, visibility panel in cab roof, sliding window in cab door, steering column height and tilt adjustable.

HEATING

Infinitely variable hot water heating with 3-speed fan, 4 adjustable defroster nozzles.

OPERATOR'S SEAT

Air-cushioned comfort-seat with integrated headrest, safety belt and lumbar support, seat heating with integrated a/c function optional. Seat position, seat inclination and seat cushion multi-adjustable in relation to position of armrests and pilot control units, allowing fatigue-free operation.

MONITORING

Ergonomic instrument layout, glare-free. Function monitoring; automatic monitoring, warning and storage of deviating operating conditions, e.g. filter pressure w. warning indicator and shutdown of pilot controls, warning indicator or shutdown of pilot controls if hydraulic oil temperature limits are exceeded. Diagnosis of individual sensors possible via the multi-function display.

AIR CONDITIONING

Automatic

ACOUSTIC POWER LEVEL

(guaranteed) in accordance with guideline 2000/14 EC
 $L_{w(A)} = 102 \text{ dB(A)}$ required under 2000/14 EG = 104 dB(A)

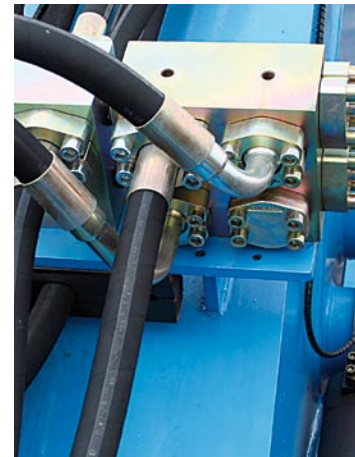
SAFETY INSTALLATIONS

For crane operations in accordance with EN 474-5.

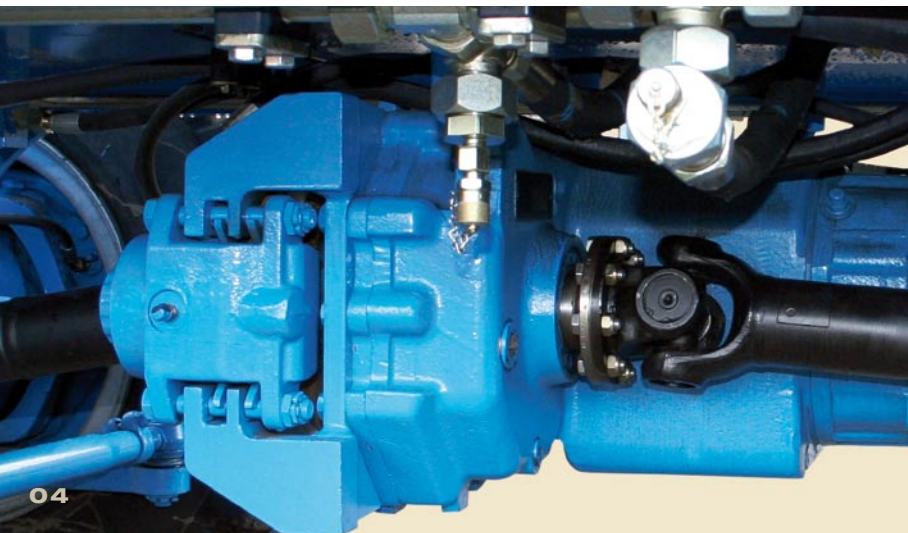
Cab protection by close proximity range limiter.


OFFICIAL HOMOLOGATION


Certification in accordance with CE regulations.





EQUIPMENT MHL350 D/MHL350 D FQC




 ENGINE	SERIES	OPTION
Exhaust gas turbocharger	●	
Intercooling	●	
Direct electronic fuel injection/ Common Rail	●	
Automatic idle	●	
Engine pre-heating		●
Interface for engine diagnosis	●	
Temperature-controlled fan drive	●	

 UNDERCARRIAGE	SERIES	OPTION
2-speed shift transmission	●	
2-speed power-shift transmission		●
4-point stabilizers	●	
4-point stabilizers, individually controllable		●
Stabilizer cylinders with integrated two-way check valves	●	
All-wheel drive with differential	●	
Piston rod protection on stabilizer cylinders	●	
Stabilizer plates 430 x 600	●	
Rear axle oscillating lock	●	
Dozer blade in addition to 4-point stabilizers		●
Special paint		●
Drum brakes	●	
Tool box	●	

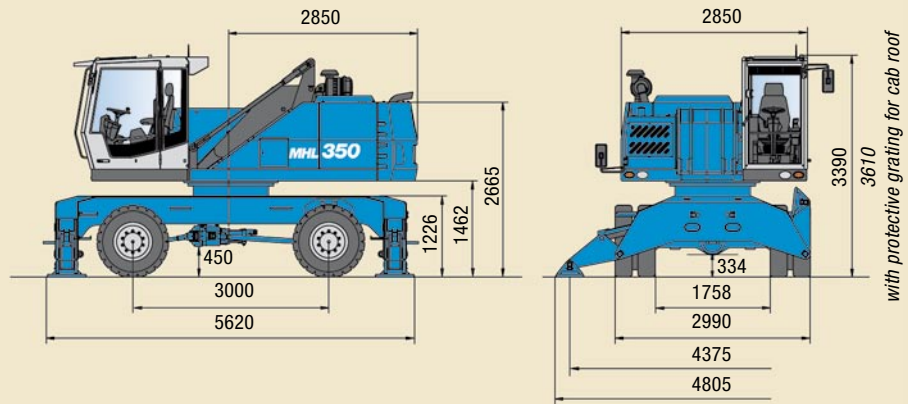
 UPPER CARRIAGE	SERIES	OPTION
Electric refuelling pump		●
Lighting protection		●
Maintenance hood, actuated by gas strut	●	
Lockable cleaning access openings on radiators	●	
Separate radiator system for ambient temperatures up to 50° C	●	
Separate oil cooler w. temperature- controlled fan drive	●	
Automatic central lubrication system	●	
Reversing alarm		●
Special paint		●

 CAB	SERIES	OPTION
Lift-up skylight in cabin roof	●	
Document clip	●	
Air cushioned operator's seat with headrest, safety belt and lumbar support	●	
FOPS protective grating		●
Hinged front windshield	●	
Front windows break-resistant (LEXAN)		●
Cab elevation 1m rigid		●
Bullet-proof glass, front and top		●
Bullet-proof glass, front and top MHL350 D FQC	●	
Cab elevation system	●	
Automatic air conditioning system	●	
Steering column, height and tilt adjustable	●	
Multi-function display	●	
Fire extinguisher, dry powder		●
Pre-equipped for radio		●
Radio cassette		●
Radio / CD player		●
Rotating beacon		●
Sliding window in cab door	●	
Safety glass	●	
Seat heating with integrated a/c function		●
Engine-independent heating		●
Windscreen washer system	●	
Dust protection system		●
Pressurized cabin system		●

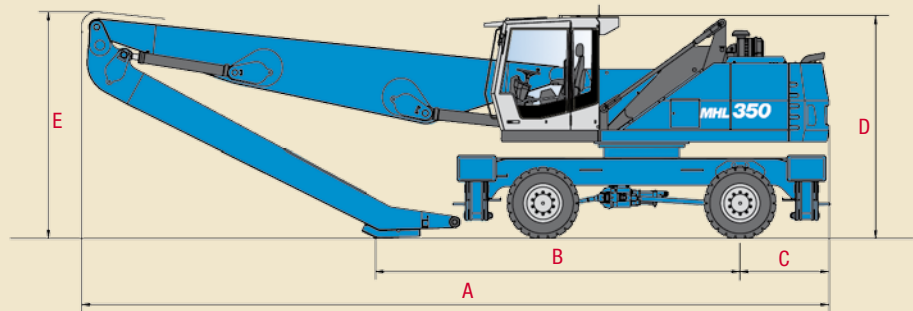
 EQUIPMENT	SERIES	OPTION
Floodlights attached to cab floor	●	
Floodlights, mounted to superstructure	●	
Floodlight, stick mounted		●
Hydraulic oil preheating		●
Close proximity range limiter for stick	●	
Coolant and hydraulic oil level monitoring system	●	
Hose rupture protection for lift cylinder		●
Hose rupture protection for stick cylinder		●
Stick shock protection	●	
Lubrication of the grab suspension by central lubrication system	●	
Overload protection/ shutdown		●
XENON floodlight on stick		●
XENON floodlight on superstructure		●
XENON floodlight on cab roof		●
Quick-connect coupling on stick	●	
Filter system for attachments		●
Filter system for attachments MHL350 D FQC	●	

DIMENSIONS

MHL350 D



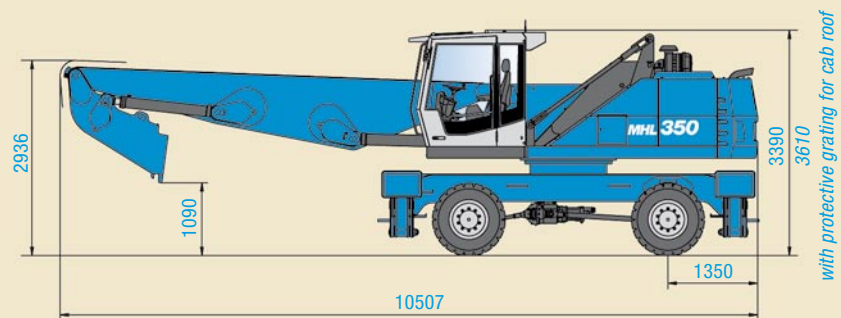
MHL350 D Transport dimensions



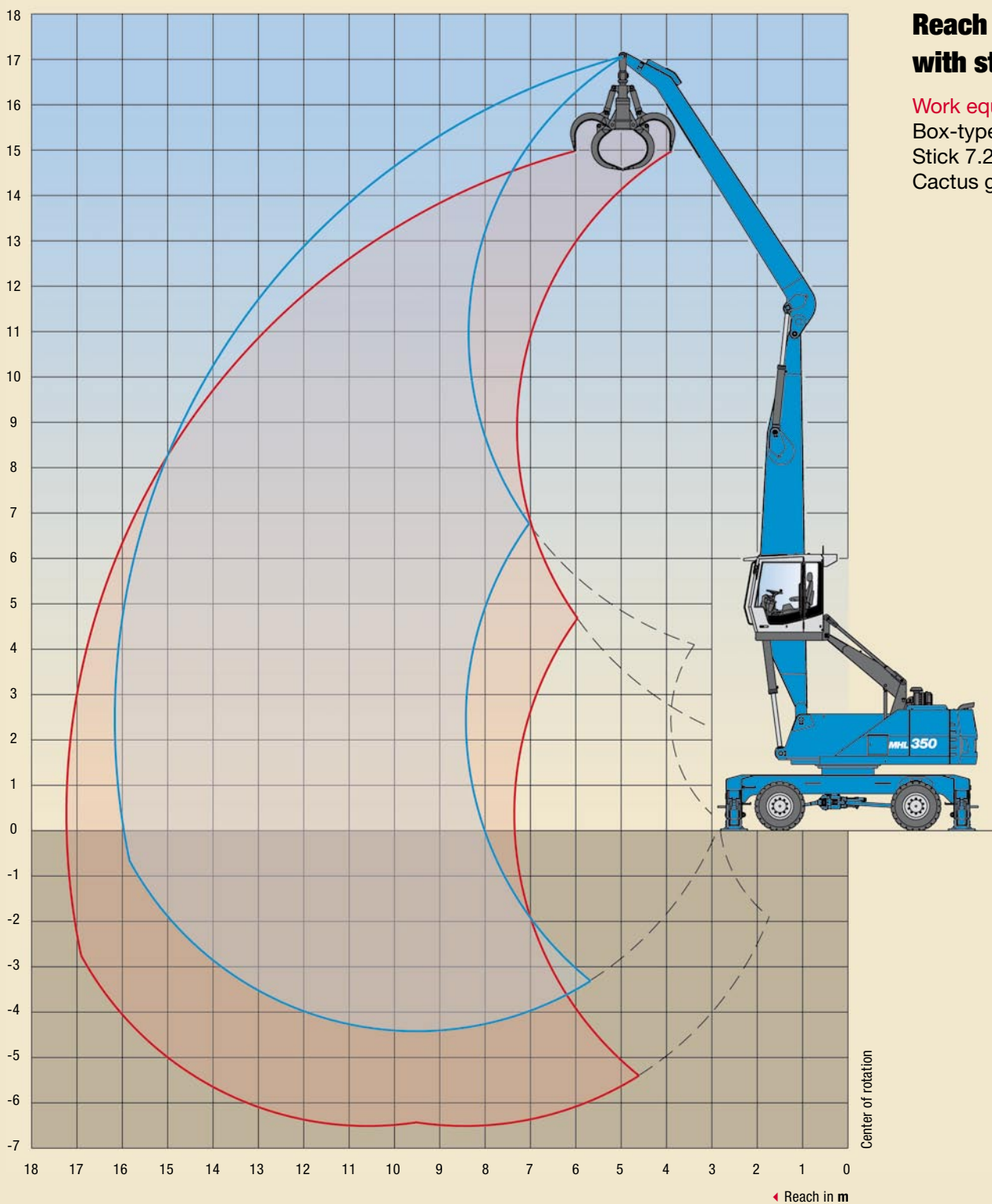
DIMENSIONS	REACH 14.0 m	REACH 15.0 m	REACH 16.0 m	REACH 14.7 m (MULTI-PURPOSE STICK)
A	11.375 mm	12.610 mm	12.565 mm	12.605 mm
B	5.465 mm	6.445 mm	5.605 mm	6.375 mm
C	1.350 mm	1.350 mm	1.350 mm	1.350 mm
D	3.390 mm/3.610 mm*	3.390 mm/3.610 mm*	3.390 mm/3.610 mm*	3.390 mm/3.610 mm*
E	3.445 mm	3.020 mm	3.600 mm	3.036 mm

* with protective grating for cab roof

MHL350 D FQC Transport dimensions



WORKING RANGES/LIFTING CAPACITIES MHL350 D



**Reach 16 m
with stick**

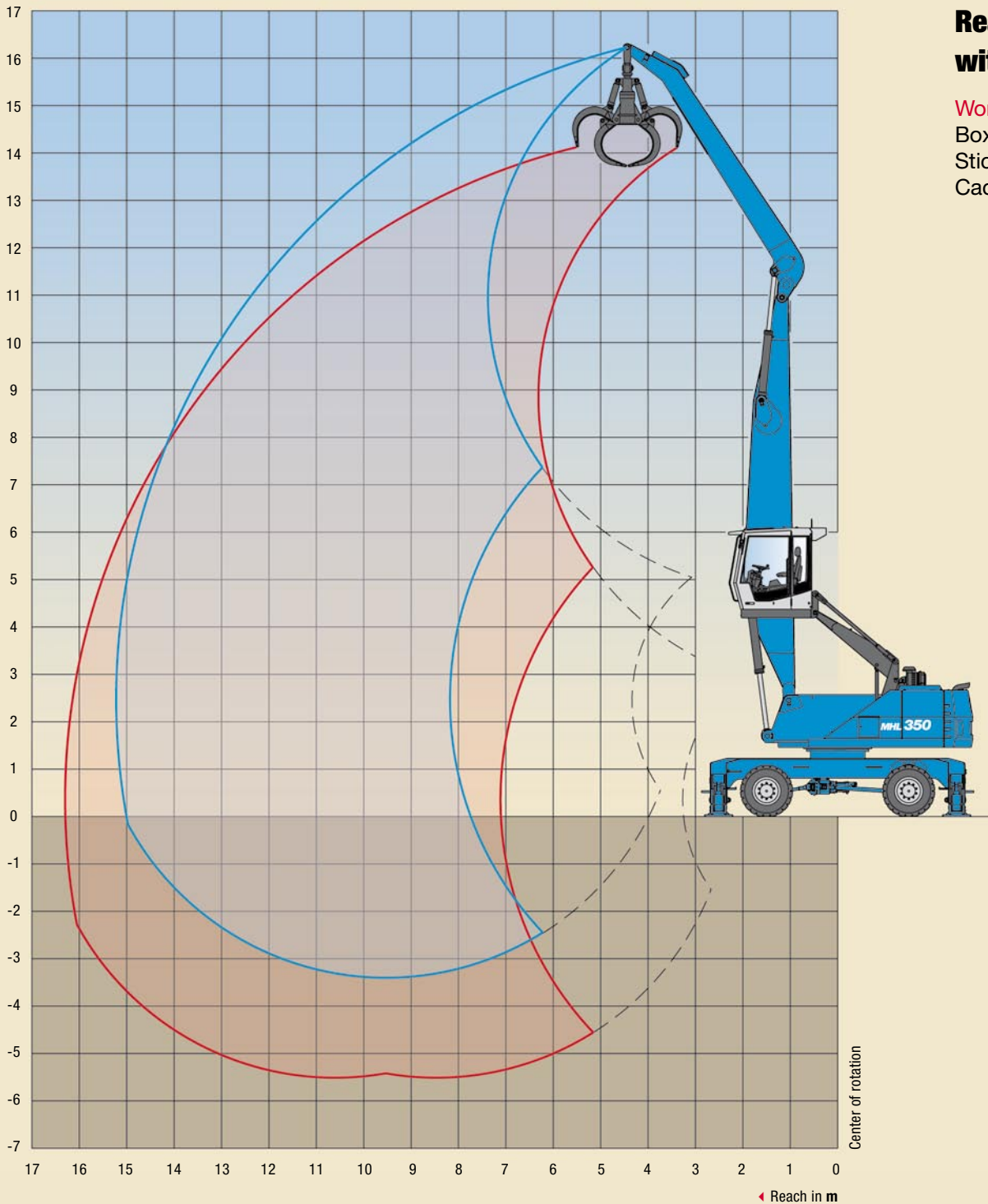
Work equipment:
Box-type boom 8.5 m;
Stick 7.2 m;
Cactus grab

HEIGHT m	UNDERCARRIAGE STABILIZERS	REACHES m							
		4.5	6	7.5	9	10.5	12	13.5	15
16.5	non supported		(4.2*)						
	4-pt. supported		4.2* (4.2*)						
15	non supported			(4.6*)	(3.3*)				
	4-pt. supported			4.6* (4.6*)	3.3* (3.3*)				
13.5	non supported				(4.7*)	(3.5*)			
	4-pt. supported				4.7* (4.7*)	3.5* (3.5*)			
12	non supported				(5.4*)	(4.3)	(3.2*)		
	4-pt. supported				5.4* (5.4*)	4.6* (4.6*)	3.2* (3.2*)		
10.5	non supported				(5.7)	(4.3)	(3.4)	(2.6*)	
	4-pt. supported				5.9* (5.9*)	5.3* (5.3*)	4.3* (4.3*)	2.6* (2.6*)	
9	non supported				(5.6)	(4.3)	(3.3)	(2.6)	
	4-pt. supported				6.2* (6.2*)	5.6* (5.6*)	5.1* (5.1*)	3.7* (3.7*)	
7.5	non supported			(7.2*)	(5.5)	(4.2)	(3.3)	(2.6)	(2.1)
	4-pt. supported			7.2* (7.2*)	6.4* (6.4*)	5.7* (5.7*)	5.1* (5.1*)	4.3 (4.5*)	2.8* (2.8*)
6	non supported			(7.1)	(5.2)	(4.0)	(3.2)	(2.5)	(2.0)
	4-pt. supported			7.8* (7.8*)	6.7* (6.7*)	5.9* (5.9*)	5.1 (5.2*)	4.2 (4.6*)	3.5 (3.7*)
4.5	non supported	(10.1*)	(9.4)	(6.6)	(4.9)	(3.8)	(3.0)	(2.4)	(2.0)
	4-pt. supported	10.1* (10.1*)	10.6* (10.6*)	8.4* (8.4*)	7.1* (7.1*)	6.1* (6.1*)	5.0 (5.3*)	4.1 (4.7*)	3.4 (4.1*)
3	non supported	(13.0)	(8.4)	(6.0)	(4.6)	(3.6)	(2.9)	(2.4)	(1.9)
	4-pt. supported	16.9* (16.9*)	11.7* (11.7*)	9.0* (9.0*)	7.4* (7.4*)	5.9 (6.2*)	4.8 (5.4*)	4.0 (4.7*)	3.4 (4.0*)
1.5	non supported	(5.3*)	(7.5)	(5.5)	(4.2)	(3.4)	(2.7)	(2.3)	(1.9)
	4-pt. supported	5.3* (5.3*)	12.5* (12.5*)	9.4* (9.4*)	7.2 (7.6*)	5.7 (6.3*)	4.7 (5.4*)	3.9 (4.6*)	3.3 (3.9*)
0	non supported	(3.8*)	(6.9)	(5.1)	(4.0)	(3.2)	(2.6)	(2.2)	(1.8)
	4-pt. supported	3.8* (3.8*)	9.2* (9.2*)	8.9 (9.5*)	6.9 (7.6*)	5.5 (6.3*)	4.5 (5.3*)	3.8 (4.5*)	3.3 (3.7*)
-1.5	non supported	(3.9*)	(6.5)	(4.8)	(3.8)	(3.1)	(2.5)	(2.1)	(1.8)
	4-pt. supported	3.9* (3.9*)	7.1* (7.1*)	8.7 (9.1*)	6.7 (7.3*)	5.4 (6.0*)	4.4 (5.0*)	3.8 (4.1*)	3.2* (3.2*)
-3	non supported		(6.4)	(4.7)	(3.7)	(3.0)	(2.5)	(2.1)	
	4-pt. supported		6.8* (6.8*)	8.3* (8.3*)	6.5 (6.7*)	5.3 (5.5*)	4.4 (4.5*)	3.6* (3.6*)	

RECOMMENDED ATTACHMENTS	
LIFT HOOKS	10 t
TEREX® FUCHS CACTUS GRAB 0.6 m³	Open or half-closed shells
TEREX® FUCHS MAGNETIC PLATE MP 1150	dia. = 1150 mm with magnet system 13 kW
CLAMSHELL GRAB 1.0 m³	Loose goods density up to 800 kg/m³

Capacity values are stated in metric tons (t). The pump pressure is 355 bar (5149 psi). The values, in accordance with ISO 10567, amount to 75% of the static tipping load or 87% of the hydraulic lifting force (marked *). They apply to slewing operations through 360° on a firm and level surface. Values in brackets apply to the longitudinal direction of the undercarriage. "Non-supported" values only apply when the load is hoisted above the front or rear axle. The weight of the attached hoisting equipment (grab, magnet, load hook etc.) must be deducted from the capacity values. In accordance with CE guidelines, hose-rupture safety valves on the lift cylinders and an overload warning device are required for crane operations.

WORKING RANGES/LIFTING CAPACITIES MHL350 D



**Reach 15 m
with stick**

Work equipment:
Box-type boom 8.5 m;
Stick 6.2 m;
Cactus grab

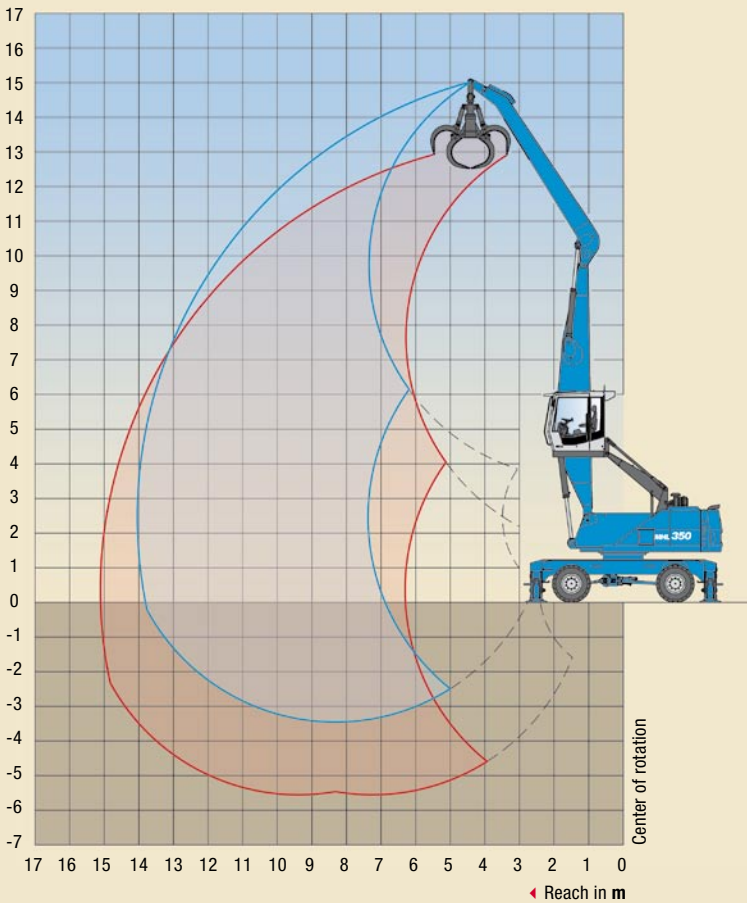
HEIGHT m	UNDERCARRIAGE STABILIZERS	REACHES m							
		4.5	6	7.5	9	10.5	12	13.5	15
15	non supported		(5.5*)	(3.7*)					
	4-pt. supported		5.5* (5.5*)	3.7* (3.7*)					
13.5	non supported			(5.7*)	(4.3*)				
	4-pt. supported			5.7* (5.7*)	4.3* (4.3*)				
12	non supported			(6.5*)	(5.5)	(4.1)			
	4-pt. supported			6.5* (6.5*)	5.7* (5.7*)	4.3* (4.3*)			
10.5	non supported			(7.2*)	(5.5)	(4.2)	(3.2)		
	4-pt. supported			7.2* (7.2*)	6.6* (6.6*)	5.6* (5.6*)	3.8* (3.8*)		
9	non supported			(7.4)	(5.4)	(4.1)	(3.2)	(2.5)	
	4-pt. supported			7.6* (7.6*)	6.7* (6.7*)	5.9* (5.9*)	5.1* (5.1*)	2.6* (2.6*)	
7.5	non supported			(7.1)	(5.3)	(4.0)	(3.2)	(2.5)	
	4-pt. supported			8.0* (8.0*)	6.9* (6.9*)	6.0* (6.0*)	5.1 (5.3*)	4.1* (4.1*)	
6	non supported		(9.7)	(6.7)	(5.0)	(3.9)	(3.1)	(2.5)	
	4-pt. supported		10.5* (10.5*)	8.5* (8.5*)	7.1* (7.1*)	6.2* (6.2*)	5.0 (5.4*)	4.1 (4.8*)	
4.5	non supported	(13.9)	(8.8)	(6.3)	(4.7)	(3.7)	(3.0)	(2.4)	(2.0)
	4-pt. supported	16.3* (16.3*)	11.6* (11.6*)	9.0* (9.0*)	7.4* (7.4*)	6.1 (6.3*)	5.0 (5.5*)	4.1 (4.8*)	2.9* (2.9*)
3	non supported	(6.4*)	(7.9)	(5.8)	(4.4)	(3.5)	(2.8)	(2.3)	(1.9)
	4-pt. supported	6.4* (6.4*)	12.5* (12.5*)	9.5* (9.5*)	7.4 (7.7*)	5.8 (6.4*)	4.8 (5.5*)	4.0 (4.7*)	3.4* (3.4*)
1.5	non supported		(7.1)	(5.3)	(4.1)	(3.3)	(2.7)	(2.3)	(1.9)
	4-pt. supported		10.3* (10.3*)	9.2 (9.7*)	7.1 (7.8*)	5.6 (6.4*)	4.7 (5.4*)	3.9 (4.6*)	3.3* (3.3*)
0	non supported		(6.7)	(5.0)	(3.9)	(3.2)	(2.6)	(2.2)	(1.9)
	4-pt. supported		7.0* (7.0*)	8.9 (9.5*)	6.8 (7.6*)	5.5 (6.3*)	4.5 (5.2*)	3.9 (4.3*)	3.0* (3.0*)
-1.5	non supported		(6.5*)	(4.9)	(3.8)	(3.1)	(2.6)	(2.2)	
	4-pt. supported		6.5* (6.5*)	8.7* (8.7*)	6.7 (7.1*)	5.4 (5.9*)	4.5 (4.8*)	3.8 (3.8*)	
-3	non supported			(4.8)	(3.8)	(3.1)			
	4-pt. supported			7.6* (7.6*)	6.3* (6.3*)	5.2* (5.2*)			

RECOMMENDED ATTACHMENTS

LIFT HOOKS	10 t
TEREX® FUCHS CACTUS GRAB 0.6 m³	Open or half-closed shells
TEREX® FUCHS CACTUS GRAB 0.8 m³	Open or half-closed shells
TEREX® FUCHS MAGNETIC PLATE MP 1250	dia. = 1250 mm with magnet system 20 kW
CLAMSHELL GRAB 1.0 m³	Loose goods density up to 1.600 kg/m³
CLAMSHELL GRAB 1.6 m³	Loose goods density up to 800 kg/m³

Capacity values are stated in metric tons (t). The pump pressure is 355 bar (5149 psi). The values, in accordance with ISO 10567, amount to 75% of the static tipping load or 87% of the hydraulic lifting force (marked *). They apply to slewing operations through 360° on a firm and level surface. Values in brackets apply to the longitudinal direction of the undercarriage. "Non-supported" values only apply when the load is hoisted above the front or rear axle. The weight of the attached hoisting equipment (grab, magnet, load hook etc.) must be deducted from the capacity values. In accordance with CE guidelines, hose-rupture safety valves on the lift cylinders and an overload warning device are required for crane operations.

WORKING RANGES/LIFTING CAPACITIES MHL350 D



Reach 14 m with stick

Work equipment:
Box-type boom 7.3 m;
Stick 6.2 m;
Cactus grab

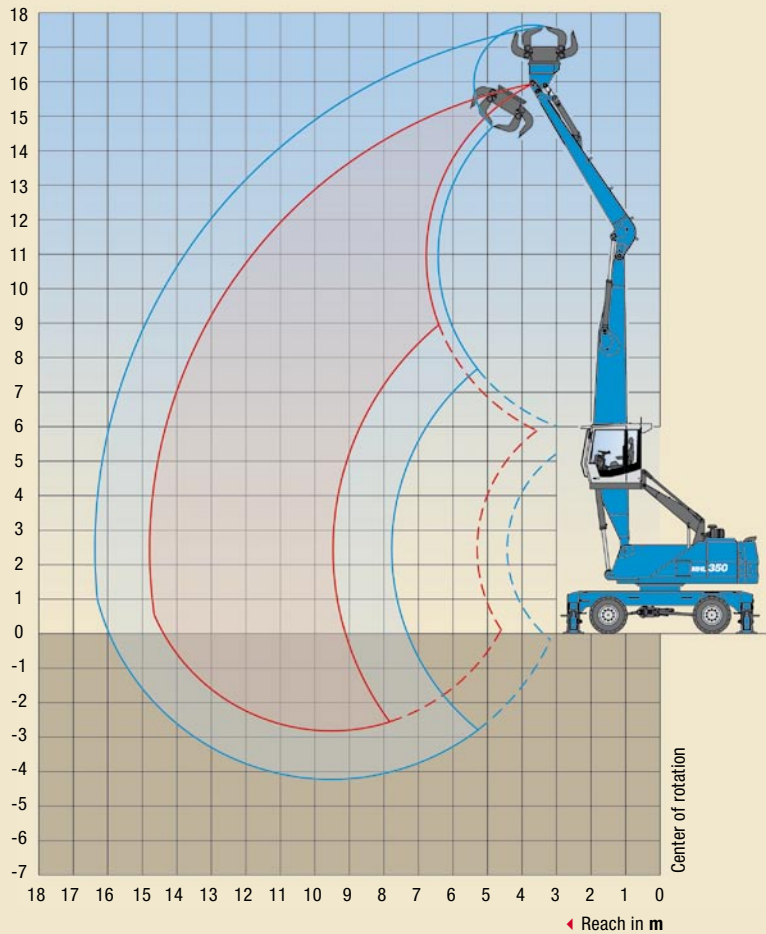
RECOMMENDED ATTACHMENTS

LIFT HOOKS	10 t
TEREX® FUCHS CACTUS GRAB 0.6 m³	Open or half-closed shells
TEREX® FUCHS CACTUS GRAB 0.8 m³	Open or half-closed shells
TEREX® FUCHS MAGNETIC PLATE MP 1250	dia. = 1250 mm with magnet system 20 kW
CLAMSHELL GRAB 1.4 m³	Loose goods density up to 1.600 kg/m³
CLAMSHELL GRAB 2.0 m³	Loose goods density up to 800 kg/m³

HEIGHT m	UNDERCARRIAGE STABILIZERS	REACHES m						
		4.5	6	7.5	9	10.5	12	13.5
13.5	non supported			(4.0*)				
	4-pt. supported			4.0* (4.0*)				
12	non supported			(5.8*)	(4.3*)			
	4-pt. supported			5.8* (5.8*)	4.3* (4.3*)			
10.5	non supported			(6.7*)	(5.5)	(4.0*)		
	4-pt. supported			6.7* (6.7*)	5.7* (5.7*)	4.0* (4.0*)		
9	non supported			(7.3*)	(5.5)	(4.2)	(3.1*)	
	4-pt. supported			7.3* (7.3*)	6.6* (6.6*)	5.4* (5.4*)	3.1* (3.1*)	
7.5	non supported			(7.3)	(5.4)	(4.2)	(3.3)	
	4-pt. supported			7.8* (7.8*)	7.0* (7.0*)	6.3* (6.3*)	4.5* (4.5*)	
6	non supported			(7.1)	(5.3)	(4.1)	(3.2)	(2.5*)
	4-pt. supported			8.3* (8.3*)	7.3* (7.3*)	6.4* (6.4*)	5.2 (5.6*)	2.8* (2.8*)
4.5	non supported	(11.1*)	(9.6)	(6.7)	(5.1)	(3.9)	(3.2)	(2.6)
	4-pt. supported	11.1* (11.1*)	11.0* (11.0*)	9.0* (9.0*)	7.6* (7.6*)	6.3 (6.6*)	5.1 (5.8*)	3.9* (3.9*)
3	non supported	(13.7)	(8.8)	(6.3)	(4.8)	(3.8)	(3.1)	(2.5)
	4-pt. supported	17.6* (17.6*)	12.4* (12.4*)	9.7* (9.7*)	7.7 (8.0*)	6.1 (6.8*)	5.0 (5.8*)	4.2 (4.6*)
1.5	non supported	(9.4*)	(8.1)	(5.9)	(4.6)	(3.7)	(3.0)	(2.5)
	4-pt. supported	9.4* (9.4*)	13.3* (13.3*)	9.8 (10.2*)	7.5 (8.2*)	6.0 (6.8*)	4.9 (5.8*)	4.1 (4.7*)
0	non supported	(5.9*)	(7.6)	(5.6)	(4.4)	(3.5)	(2.9)	(2.5)
	4-pt. supported	5.9* (5.9*)	13.4* (13.4*)	9.5 (10.2*)	7.3 (8.2*)	5.8 (6.7*)	4.8 (5.5*)	4.1 (4.3*)
-1.5	non supported	(5.7*)	(7.3)	(5.4)	(4.2)	(3.5)	(2.9)	
	4-pt. supported	5.7* (5.7*)	11.7* (11.7*)	9.3 (9.7*)	7.1 (7.8*)	5.8 (6.3*)	4.8 (5.0*)	
-3	non supported		(7.3)	(5.4)	(4.2)	(3.4)		
	4-pt. supported		10.8* (10.8*)	8.6* (8.6*)	6.9* (6.9*)	5.5* (5.5*)		

Capacity values are stated in metric tons (t). The pump pressure is 355 bar (5149 psi). The values, in accordance with ISO 10567, amount to 75% of the static tipping load or 87% of the hydraulic lifting force (marked *). They apply to slewing operations through 360° on a firm and level surface. Values in brackets apply to the longitudinal direction of the undercarriage. "Non-supported" values only apply when the load is hoisted above the front or rear axle. The weight of the attached hoisting equipment (grab, magnet, load hook etc.) must be deducted from the capacity values. In accordance with CE guidelines, hose-rupture safety valves on the lift cylinders and an overload warning device are required for crane operations.

WORKING RANGES/LIFTING CAPACITIES MHL350 D



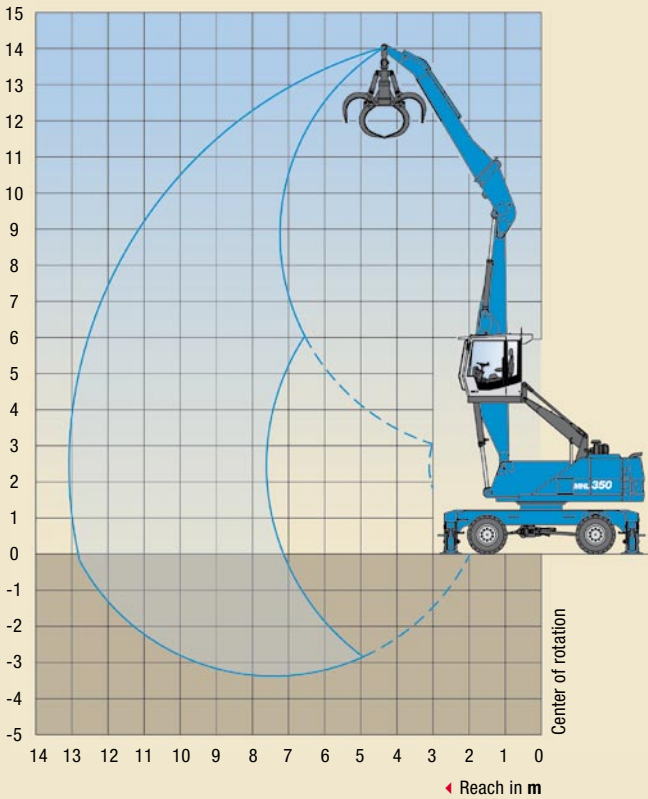
**Reach 14.7 m
with multi-purpose stick**

Work equipment:
Box-type boom 8.5 m;
Multi-purpose stick 5.6 m;
Sorting grab

HEIGHT m	UNDERCARRIAGE STABILIZERS	REACHES m						
		4.5	6	7.5	9	10.5	12	13.5
13.5	non supported		(4.6*)					
	4-pt. supported		4.6* (4.6*)					
12	non supported			(5.4*)				
	4-pt. supported			5.4* (5.4*)				
10.5	non supported			(6.7*)	(5.1)	(3.4*)		
	4-pt. supported			6.7* (6.7*)	5.5* (5.5*)	3.4* (3.4*)		
9	non supported			(7.1)	(5.2)	(3.9)	(2.6)	
	4-pt. supported			7.6* (7.6*)	6.6* (6.6*)	5.4* (5.4*)	2.6* (2.6*)	
7.5	non supported			(7.0)	(5.1)	(3.9)	(3.0)	
	4-pt. supported			7.8* (7.8*)	6.7* (6.7*)	5.9* (5.9*)	4.7* (4.7*)	
6	non supported		(9.8*)	(6.8)	(5.0)	(3.8)	(2.9)	(2.3)
	4-pt. supported		9.9* (9.9*)	8.1* (8.1*)	6.9* (6.9*)	5.9* (5.9*)	4.9 (5.2*)	3.0* (3.0*)
4.5	non supported	(13.7*)	(9.2)	(6.4)	(4.7)	(3.6)	(2.9)	(2.3)
	4-pt. supported	13.7* (13.7*)	10.8* (10.8*)	8.5* (8.5*)	7.1* (7.1*)	6.0* (6.1*)	4.8 (5.3*)	3.9 (4.4*)
3	non supported	(12.8)	(8.3)	(5.9)	(4.4)	(3.5)	(2.8)	(2.2)
	4-pt. supported	17.1* (17.1*)	11.8* (11.8*)	9.0* (9.0*)	7.4* (7.4*)	5.8 (6.2*)	4.7 (5.3*)	3.9 (4.5*)
1.5	non supported		(7.4)	(5.4)	(4.2)	(3.3)	(2.6)	(2.2)
	4-pt. supported		12.5* (12.5*)	9.3* (9.4*)	7.1 (7.5*)	5.6 (6.2*)	4.6 (5.3*)	3.8 (4.4*)
0	non supported		(6.8)	(5.0)	(3.9)	(3.1)	(2.5)	(2.1)
	4-pt. supported		7.6* (7.6*)	8.9 (9.4*)	6.8 (7.5*)	5.4 (6.2*)	4.5 (5.1*)	3.7 (4.2*)
-1.5	non supported		(6.1)	(4.8)	(3.7)	(3.0)	(2.5)	(2.1)
	4-pt. supported		6.1* (6.1*)	8.6 (9.0*)	6.6 (7.2*)	5.3 (5.9*)	4.4 (4.9*)	3.7 (3.9*)
-3	non supported		(6.2*)	(4.7)	(3.6)	(2.9)	(2.4)	
	4-pt. supported		6.2* (6.2*)	8.1* (8.1*)	6.5 (6.6*)	5.2 (5.4*)	4.3* (4.4*)	

Capacity values are stated in metric tons (t). The pump pressure is 355 bar (5149 psi). The values, in accordance with ISO 10567, amount to 75% of the static tipping load or 87% of the hydraulic lifting force (marked *). They apply to slewing operations through 360° on a firm and level surface. Values in brackets apply to the longitudinal direction of the undercarriage. "Non-supported" values only apply when the load is hoisted above the front or rear axle. The weight of the attached hoisting equipment (grab, magnet, load hook etc.) must be deducted from the capacity values. In accordance with CE guidelines, hose-rupture safety valves on the lift cylinders and an overload warning device are required for crane operations.

WORKING RANGES/LIFTING CAPACITIES MHL350 D FQC



Reach 13 m with stick

Work equipment:
 Box-type boom 6.4 m;
 Stick 6.1 m;
 Cactus grab

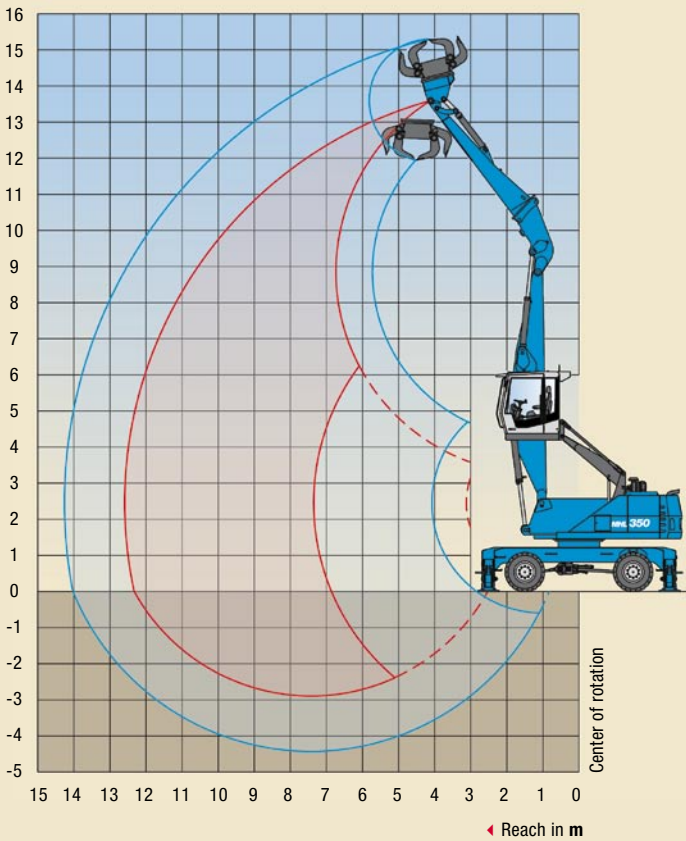
RECOMMENDED ATTACHMENTS

LIFT HOOKS	10 t
TEREX® FUCHS CACTUS GRAB 0.6 m³	Open or half-closed shells
TEREX® FUCHS CACTUS GRAB 0.8 m³	Open or half-closed shells
TEREX® FUCHS MAGNETIC PLATE MP 1250	dia. = 1250 mm with magnet system 20 kW
CLAMSHELL GRAB 1.4 m³	Loose goods density up to 1.600 kg/m³
CLAMSHELL GRAB 2.0 m³	Loose goods density up to 800 kg/m³

HEIGHT m	UNDERCARRIAGE STABILIZERS	REACHES m					
		4.5	6	7.5	9	10.5	12
13.5	non supported		(5.2*)				
	4-pt. supported		5.2* (5.2*)				
12	non supported			(5.6*)			
	4-pt. supported			5.6* (5.6*)			
10.5	non supported			(6.6*)	(5.1)		
	4-pt. supported			6.6* (6.6*)	5.3* (5.3*)		
9	non supported			(7.1*)	(5.2)	(3.9)	
	4-pt. supported			7.1* (7.1*)	6.3* (6.3*)	4.7* (4.7*)	
7.5	non supported			(7.2)	(5.2)	(3.9)	(2.9)
	4-pt. supported			7.5* (7.5*)	6.8* (6.8*)	5.8* (5.8*)	3.1* (3.1*)
6	non supported			(6.9)	(5.0)	(3.8)	(2.9)
	4-pt. supported			7.8* (7.8*)	6.9* (6.9*)	6.2* (6.2*)	4.5* (4.5*)
4.5	non supported		(9.1*)	(6.6)	(4.8)	(3.7)	(2.8)
	4-pt. supported		9.1* (9.1*)	8.4* (8.4*)	7.2* (7.2*)	6.0 (6.3*)	4.8 (5.4*)
3	non supported	(12.9*)	(8.8)	(6.1)	(4.6)	(3.5)	(2.8)
	4-pt. supported	12.9* (12.9*)	11.4* (11.4*)	9.1* (9.1*)	7.5* (7.5*)	5.9 (6.4*)	4.7 (5.4*)
1.5	non supported	(12.3)	(8.0)	(5.7)	(4.3)	(3.3)	(2.7)
	4-pt. supported	18.3* (18.3*)	12.6* (12.6*)	9.6* (9.6*)	7.2 (7.8*)	5.7 (6.4*)	4.6 (5.4*)
0	non supported	(9.0*)	(7.3)	(5.3)	(4.1)	(3.2)	(2.6)
	4-pt. supported	9.0* (9.0*)	13.0* (13.0*)	9.2 (9.8*)	7.0 (7.7*)	5.5 (6.2*)	4.5 (4.9*)
-1.5	non supported	(7.6*)	(7.0)	(5.1)	(3.9)	(3.1)	
	4-pt. supported	7.6* (7.6*)	12.3* (12.3*)	9.0 (9.3*)	6.8 (7.3*)	5.5 (5.7*)	
-3	non supported		(6.8)	(5.0)	(3.9)		
	4-pt. supported		10.6* (10.6*)	8.2* (8.2*)	6.3* (6.3*)		

Capacity values are stated in metric tons (t). The pump pressure is 355 bar (5149 psi). The values, in accordance with ISO 10567, amount to 75% of the static tipping load or 87% of the hydraulic lifting force (marked *). They apply to slewing operations through 360° on a firm and level surface. Values in brackets apply to the longitudinal direction of the undercarriage. "Non-supported" values only apply when the load is hoisted above the front or rear axle. The weight of the attached hoisting equipment (grab, magnet, load hook etc.) must be deducted from the capacity values. In accordance with CE guidelines, hose-rupture safety valves on the lift cylinders and an overload warning device are required for crane operations.

WORKING RANGES/LIFTING CAPACITIES MHL350 D FQC



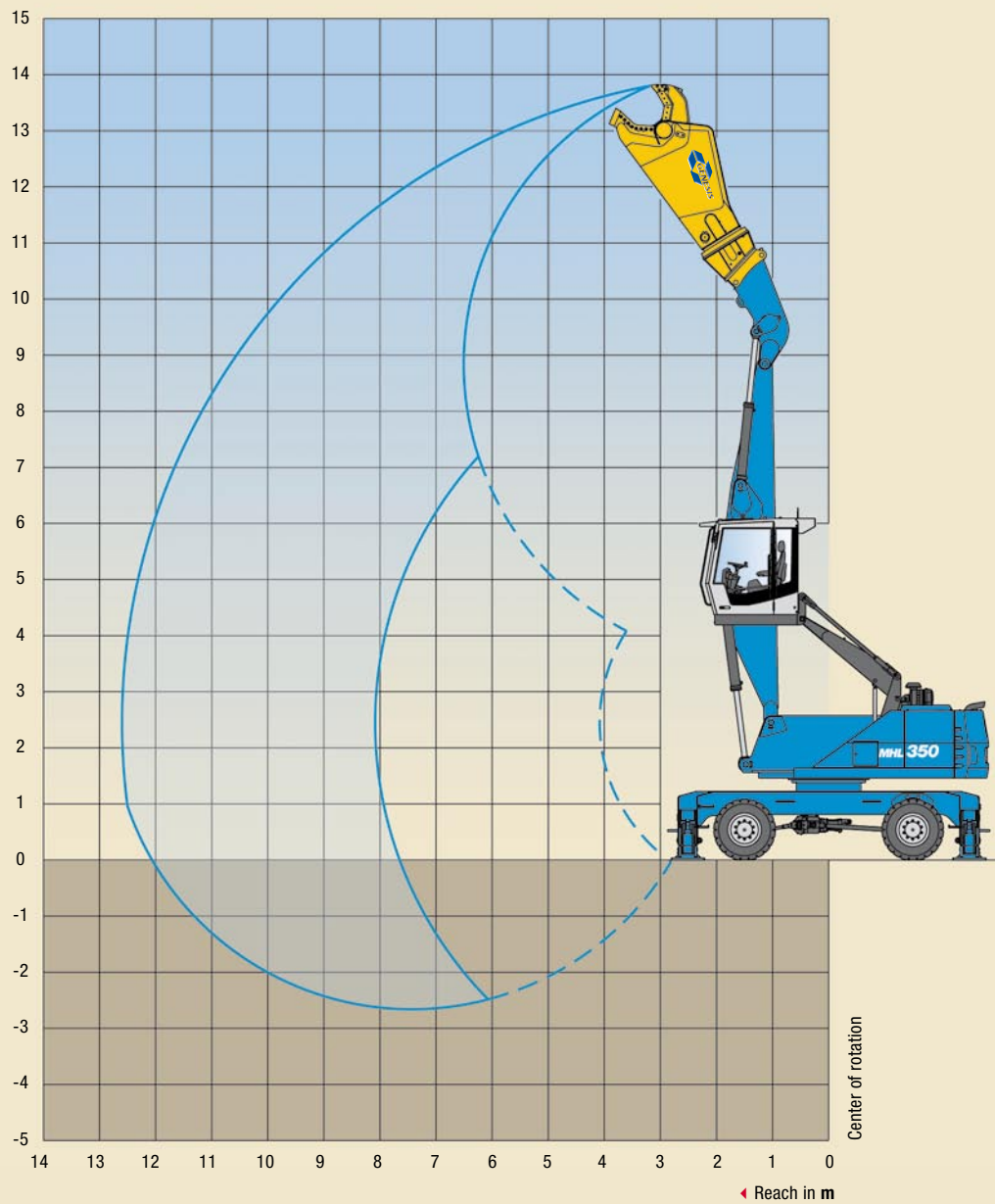
**Reach 12.5 m
with multi-purpose stick**

Work equipment:
 Box-type boom 6.4 m;
 Multi-purpose stick 5.6 m;
 Sorting grab

HEIGHT m	UNDERCARRIAGE STABILIZERS	REACHES m					
		4.5	6	7.5	9	10.5	12
13.5	non supported	(6.4*)					
	4-pt. supported	6.4* (6.4*)					
12	non supported		(6.5*)	(4.3)*			
	4-pt. supported		6.5* (6.5*)	4.3* (4.3*)			
10.5	non supported			(6.2)*	(4.2*)		
	4-pt. supported			6.2* (6.2*)	4.2* (4.2*)		
9	non supported			(6.6)	(4.6)	(3.2*)	
	4-pt. supported			6.9* (6.9*)	5.8* (5.8*)	3.2* (3.2*)	
7.5	non supported			(6.5)	(4.6)	(3.4)	
	4-pt. supported			7.2* (7.2*)	6.4* (6.4*)	5.0* (5.0*)	
6	non supported		(8.2*)	(6.3)	(4.5)	(3.3)	(2.5)
	4-pt. supported		8.2* (8.2*)	7.6* (7.6*)	6.6* (6.6*)	5.7 (5.8*)	2.9* (2.9*)
4.5	non supported		(8.8)	(6.0)	(4.3)	(3.2)	(2.4)
	4-pt. supported		10.0* (10.0*)	8.2* (8.2*)	6.9* (6.9*)	5.5 (5.9*)	4.2* (4.2*)
3	non supported	(13.2)	(8.1)	(5.6)	(4.1)	(3.1)	(2.4)
	4-pt. supported	16.2* (16.2*)	11.4* (11.4*)	8.9* (8.9*)	7.0 (7.2*)	5.4 (6.0*)	4.3 (4.9*)
1.5	non supported	(11.8)	(7.5)	(5.2)	(3.9)	(3.0)	(2.3)
	4-pt. supported	15.5* (15.5*)	12.5* (12.5*)	9.2 (9.3*)	6.8 (7.4*)	5.3 (6.0*)	4.2 (4.7*)
0	non supported	(7.0*)	(7.0)	(5.0)	(3.7)	(2.9)	(2.3)
	4-pt. supported	7.0* (7.0*)	12.7* (12.7*)	8.9 (9.4*)	6.6 (7.3*)	5.2 (5.7*)	4.1* (4.1*)
-1.5	non supported	(6.7*)	(6.8)	(4.8)	(3.6)	(2.8)	
	4-pt. supported	6.7* (6.7*)	11.8* (11.8*)	8.7 (8.8*)	6.5 (6.7*)	5.0* (5.0*)	

Capacity values are stated in metric tons (t). The pump pressure is 355 bar (5149 psi). The values, in accordance with ISO 10567, amount to 75% of the static tipping load or 87% of the hydraulic lifting force (marked *). They apply to slewing operations through 360° on a firm and level surface. Values in brackets apply to the longitudinal direction of the undercarriage. "Non-supported" values only apply when the load is hoisted above the front or rear axle. The weight of the attached hoisting equipment (grab, magnet, load hook etc.) must be deducted from the capacity values. In accordance with CE guidelines, hose-rupture safety valves on the lift cylinders and an overload warning device are required for crane operations.

WORKING RANGES/DATA MHL350 D FQC



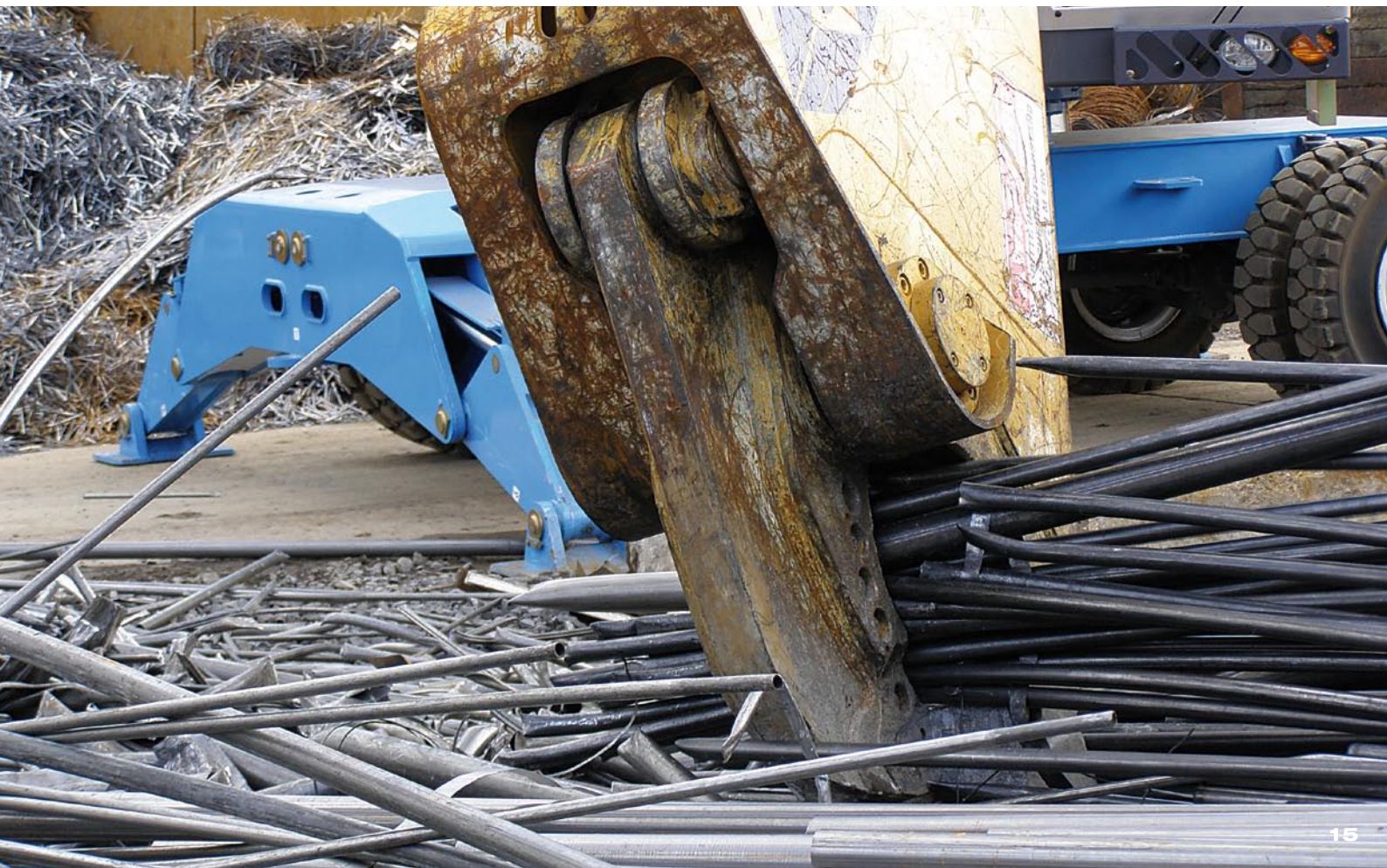
**Reach 12.5 m
with scrap shears**

Work equipment:
Box-type boom 6.4 m;
Scrap shears GXP 400R
with Quick Connect FQC

GENESIS SCRAP SHEARS GXP 400R

CUTTING FORCE	6.770 kN
JAW DEPTH	737 mm
JAW OPENING	711 mm
WEIGHT*	5.1 t

* inc. Quick Connect system



**PURPOSE
BUILT**



RESPONDING MORE QUICKLY TO THE CHALLENGE

MHL350 D und FQC. The unbeatable combination

The MHL350 D can be supplied both with a classic boom and with the Terex® Fuchs Quick Connect (FQC) system. The three letters FQC show that the tools can be swiftly and speedily changed. For example, the multi-purpose stick with grab or the stick with magnetic plate can be exchanged for the GENESIS scrap shears in less than a minute.

MHL350 D. Staying power for the modern scrap industry

Operating weight up to 37.5 tons, 16-metres reach and 3-metres undercarriage width for a particularly stable base: with this specification the MHL350 D demonstrates its impressive power. The powerful 148 kW/ 198 hp turbo diesel engine and the high-performance hydraulics in the particularly efficient dual-circuit system mean that loads of many tonnes can be effortlessly moved with speed and precision. The machine's robustness is already legendary; its other strengths include the most up-to-date technology on the market and the high priority placed on safety. The multi-function display makes all the important operating data available at a glance; the layout of the controls is convenient and ergonomic. The comfort seat, height-adjustable cab and large panoramic windows ensure that the operator remains completely in control, even on the busiest of days.

The Quick Connect system is based on leakage-free quick-connect couplings which, with the help of a hydraulic locking device, can be connected to each other with no loss of oil and almost without wear. All connections are protected against shocks and contamination; the robust design of the unit made up of stick and Quick Connect coupling ensures mechanical stability. Sensors verify correct positioning and secure locking when connecting and disconnecting and relay the information direct to the operator's cab.

The Terex® Fuchs Quick Connect system maximizes efficiency, enabling a single machine to carry out a whole range of tasks with very short changeover times. It also adds considerably to safety. The operator no longer needs to leave the cab to change the tools, and fiddling with bolts is a thing of the past. On account of its many advantages, the FQC system has been awarded the TBG's Euro-Test prize.

